

To Those Receiving the COVID-19 Vaccine






~ take care of your health afterwards ~
(especially immediately after to a few days later)

After receiving the vaccine, **please sit within the vaccination venue for 15 minutes** to see how you feel.

Symptoms that may occur

As the vaccine used in Japan is an intramuscular injection, minor side effects such as pain and fatigue may occur but these normally subside in a few days. Take painkillers if needed and observe your condition. (It is rare for symptoms to be severe enough to affect your daily life)

【Type of symptoms】

Symptom									
	Pain	Swelling	Diarrhea	Muscle pain	Joint pain	Headache	Fatigue	Chills	Fever

This vaccine requires 2 doses. It has been found that these symptoms are more likely to occur after the second dose. Younger ages are also more likely than the elderly to have symptoms. Side effects occur as a result of an immunoreaction and are a sign that your immune system is active.

If the above symptoms continue or if you notice an abnormal change to your health, please consult the venue where you received your vaccination, your general practitioner or the Osaka Prefectural COVID-19 Vaccination Consultation Center.

Please see a doctor if you experience severe pain or fatigue, high fever or other serious symptoms.

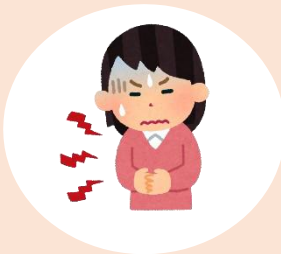
Serious symptoms that might occur

【Symptoms and timing】

- If the following symptoms occur immediately after receiving the vaccine, or between 5-30 minutes after, there is a possibility you have anaphylactic shock.



- Itchiness
- Hives
- Red spots
- Reddening of skin



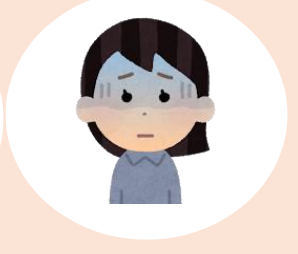
- Stomach pain, nausea



- Abnormality with eyesight



- Hoarse voice
- Sneezing
- Itchiness in throat
- Breathing difficulties



- Paleness
- Clouding of consciousness

Wait at the venue after receiving your vaccination and if any of these symptoms occur, immediately tell a doctor or nurse.

■ If these symptoms occur after you leave the vaccination venue, please contact the Osaka Prefectural COVID-19 Vaccination Consultation Center. They are open 24 hours a day.

For severe symptoms

Osaka Prefectural COVID-19 Vaccination Consultation Center



0570-012-336/06-6635-2047

24 hours

Open on weekends & public holidays

※Japanese only



Scan the QR code for details and updates